

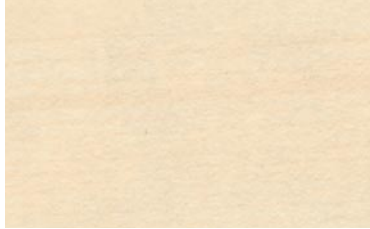
brunner ::

decor . nature . colour . neutral . structure

Tischdekore Dessus stratifiés Top surfaces

nature

Tischdekore
Dessus stratifiés
Top surfaces



R 5464 ahorn hell
érable blanc | light maple

A



F 37/023 buche blume
hêtre dosse | bloomed beech

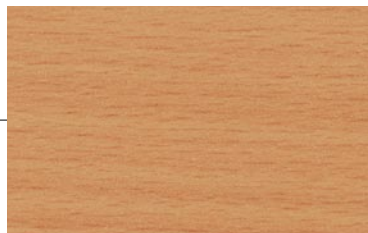
A



F 30/010 ulme ovid zimt
orme ovid cannelle
ovid elm cinnamon



R 5479 bergahorn
érable des montagnes | sycamore



F 37/009 buche gedämpft
hêtre étuvé | steamed beech

A

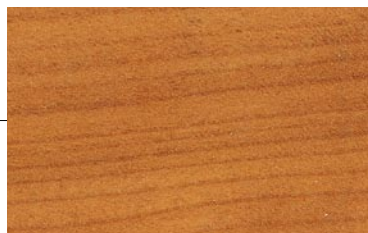


R 4272 eiche dunkel
chêne foncé | dark oak



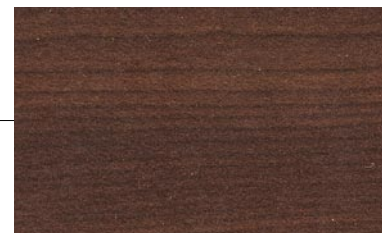
R 4223 lindberg eiche
chêne de lindberg | lindberg oak

A



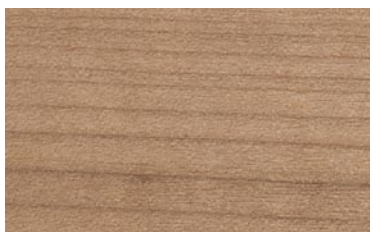
F 35/005 kirsche hell
merisier clair | light cherry

A



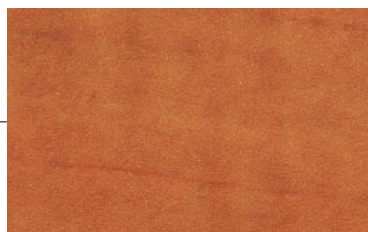
R 5447 ahorn after eight
érable after eight brun
after eight maple

A

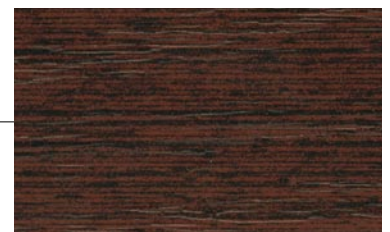


R 5681 kirsche havanna
cerisier havanna | havanna cherry

A



R 5410 wildbirne cognac
poirier sauvage cognac
cognac wild pear



F 17/003 wenge chill-out



R 4801 nussbaum standard
noyer standard | standard walnut

A

structure



F 22/012 cosmic wood cream



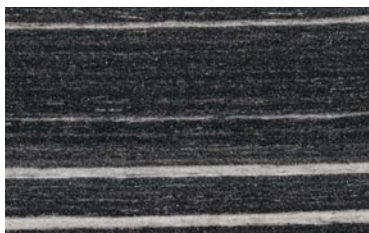
F 8008 alu wave silber
ondes alu argent | silver alu wave A



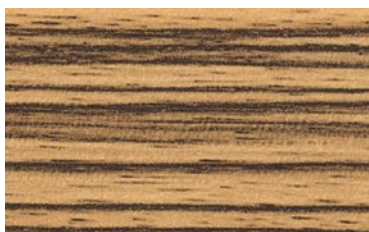
F 22/013 cosmic wood cacao



edelstahl 3
edelstahl 3, métallique A
edelstahl 3, metallic



F 7223 esprit black
esprit noir | black esprit



R 5693 zebrano

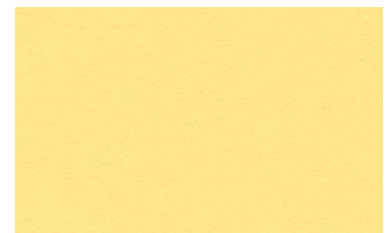
colour



U 074 atlantik
atlantique | atlantic



U 107 avocado
avocat | avocado



U 192 sonnenblume
tournesol | sunflower

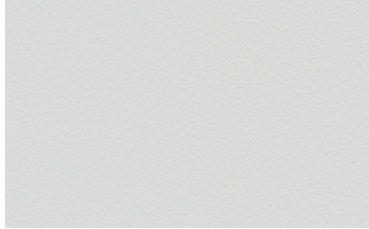


U 225 signalrot
rouge | signal red

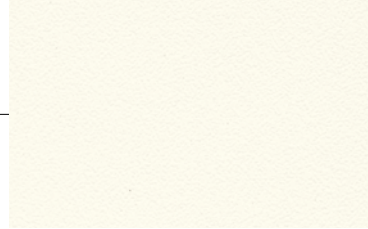


U 031 bordeaux

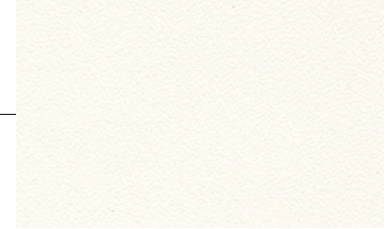
neutral



U 036 mittelgrau
gris moyen | mid grey



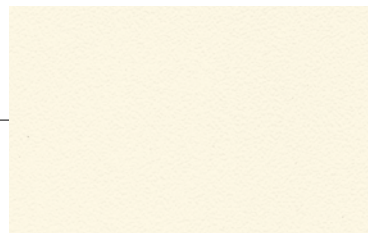
U 002 weiß
blanc | white



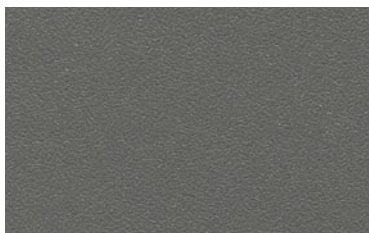
SR 209 edelweiß
blanc neige | edelweiss



U 010 platingrau
gris platine | platin grey



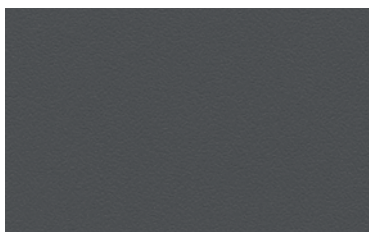
U 230 vanille hell
vanille claire | light vanilla



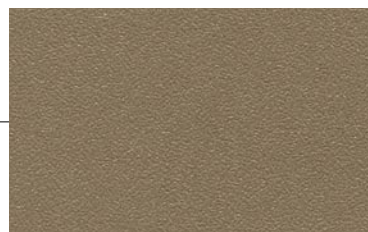
U 018 basaltgrau
gris basalte | basalt grey



U 1184 sandgrau
gris sable | sand grey



U 231 schiefergrau
gris ardoise | slate grey



U 1193 cuando
gris cuando | cuanado

A ABS Kanten für die Plattenstärke
15 mm, 20 mm, 30 mm, 40 mm, 50 mm,
70 mm verfügbar.
Chants ABS disponibles pour les
plateaux épaisseurs 15 mm, 20 mm,
30 mm, 40 mm, 50 mm, 70 mm.
ABS edging can be delivered for the
table top thickness 15 mm, 20 mm,
30 mm, 40 mm, 50 mm, 70 mm.



U 007 graphitschwarz
noir graphite | graphite black



U 089 fango

A ABS Kanten für die Plattenstärke
15 mm, 20 mm, 30 mm verfügbar.
Chants ABS disponibles pour les
plateaux épaisseurs 15 mm, 20 mm,
30 mm.
ABS edging can be delivered for the
table top thickness 15 mm, 20 mm,
30 mm.

nature . colour . neutral . structure

HPL-Hochdruck-
Schichtstoffplatten
(nach EN 438-3) 0,8 mm

Panneau stratifié
haute pression HPL
(norme EN 438-3) 0,8 mm

HPL high pressure
laminated tops
(nach EN 438-3) 0.8 mm

Technische Änderungen, Irrtümer
und Farbabweichungen vorbehalten.

Sous réserve de modifications
techniques, d'erreurs d'impression
et de variation des couleurs.

For all information given in this
document we reserve the right to
amend any errors.