



MATERIALKUNDE

WISSENSWERTES AUF DER DIGITALEN PLATTFORM

MATERIALS SCIENCE

USEFUL INFORMATION ON THE DIGITAL PLATFORM



INFORMATIONS SUR LES MATÉRIAUX

INFORMATIONS UTILES SUR LA PLATEFORME NUMÉRIQUE

INFORMACIÓN DE MATERIALES

INFORMACIÓN ÚTIL EN LA PLATAFORMA DIGITAL

(D)

RIME

Erfüllt folgende Normen:

EN 1021 Teil 1 + 2
DIN 4102 Teil 1; B2

90% Schurwolle, Kammgarn
10% Nylon

Breite
140 cm

Gewicht
580 g/lfm

Scheuerprüfung
EN ISO 12947-2
100.000 Touren

Pilling
4 EN ISO 12945-2

Lichtechtheit
5-6 EN ISO 105B 02

Reibechtheit
4-5 EN ISO 105X-12

(GB)

RIME

According to following standards:

EN 1021 Part 1 + 2

90% New wool, Worsted
10% Nylon

Width
140 cm

Weight
580 g/rm

Abrasion test
EN ISO 12947-2
100.000 cycles

Pilling
4 EN ISO 12945-2

Light fastness
5-6 EN ISO 105B 02

Fastness to rubbing
4-5 EN ISO 105X-12

(F)

RIME

Remplissant les normes suivantes:

EN 1021 Partie 1 + 2

90% Laine peignée
10% Nylon

Largeur
140 cm

Poids
580 g/ml

Test d'abrasion Martindale
EN ISO 12947-2
100.000 tours

Boulochage
4 EN ISO 12945-2

Résistance à la lumière
5-6 EN ISO 105B 02

Résistance au frottement
4-5 EN ISO 105X-12

(ES)

RIME

Según los siguientes estándares:

EN 1021 Parte 1 + 2

90% Lana esquilada
10% Nylon

Ancho
140 cm

Peso
580 g/metro de rollo

Test de desgaste por fricción
Martindale EN ISO 12947-2
100.000 Revoluciones

Frisado
4 EN ISO 12945-2

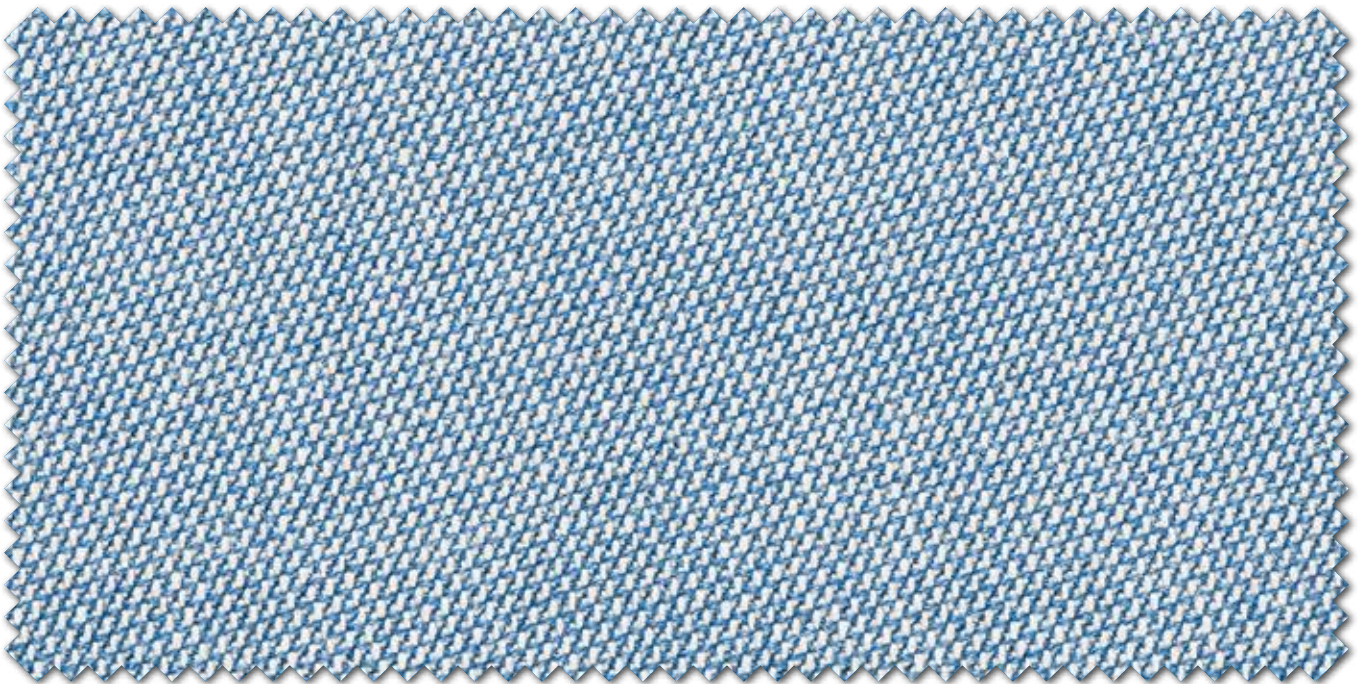
Resistencia a la luz
5-6 EN ISO 105B 02

Resistencia a la fricción
4-5 EN ISO 105X-12

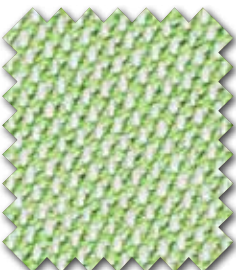
4 HIGH PERFORMANCE

RIME

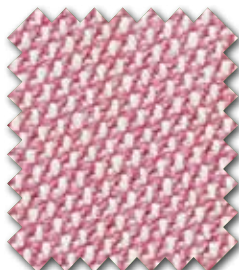
interstuhl



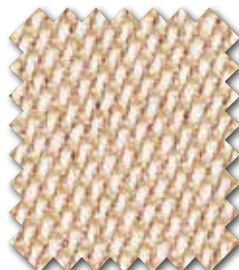
RI02



RI04



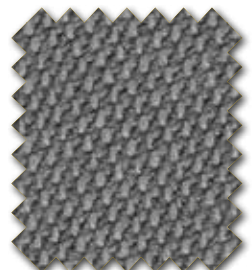
RI13



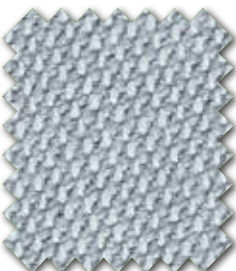
RI03



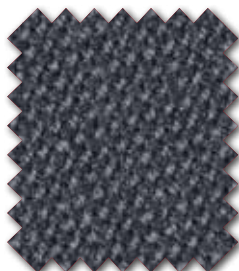
RI05



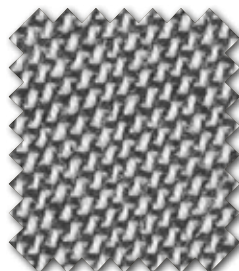
RI15



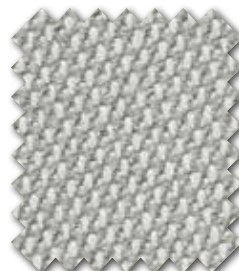
RI21



RI11



RI01



RI31