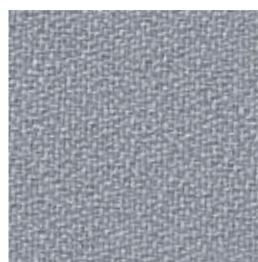
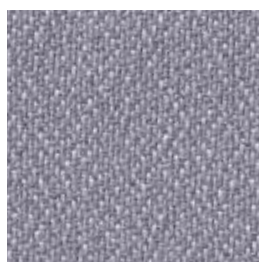




A 52 silver



A 50 medium grey



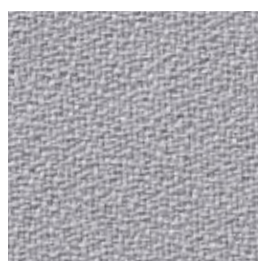
A 53 nickel



A 64 anthracite



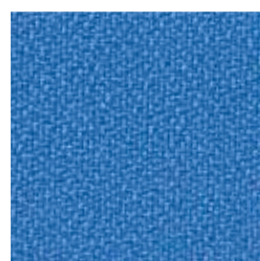
A 51 heather



A 98 stone



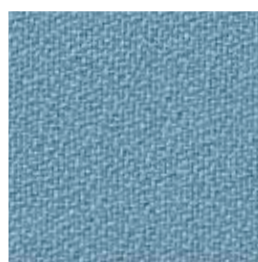
A 59 steel



A 70 cyan blue



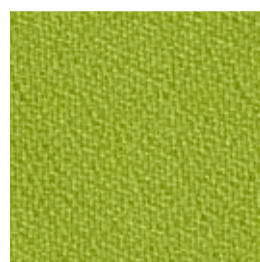
A 68 sky



A 79 baltic sea



A 54 reseda



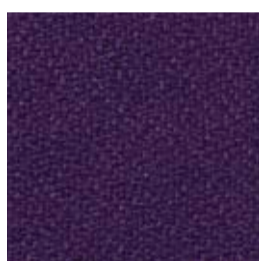
A 80 spring



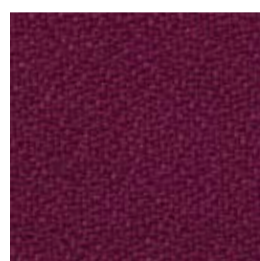
A 56 daylight blue



A 62 dark blue



A 93 purple



A 92 bordeaux



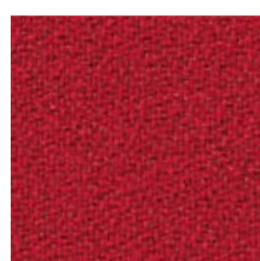
A 66 yellow



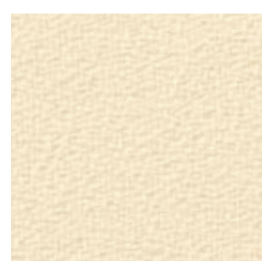
A 57 sunshine



A 73 orange



A 65 red



A 99 beach



A 100 grit



A 101 nougat



A 67 terracotta

Stoffgruppe · Fabric · Tissu · Tessuto



Die Größe der abgebildeten Stoffstrukturen entspricht nicht immer dem Originalstoff. Farbabweichungen sind aus drucktechnischen Gründen möglich.

The size of the materials structure shown does not always correspond to the original material. Due to the limitations of the printing process the materials and colours shown are not always a true copy of the original.

La dimension des structures de matériau représentées ne correspond pas toujours au matériau d'origine. Pour des raisons techniques d'impression, des variations de teintes sont possibles.

Technische Beschreibung

Materialzusammensetzung 100 % Polyester Trevira CS
Gewicht ca. 400 g/lfm.
Breite 170 cm
Brandschutz DIN 4102 B1, entspricht den Normen in Deutschland
Scheuerfestigkeit 20.000 Touren nach Martindale
Lichtechtheit 5 - 6
Reinigung Mit einem feuchten Tuch abwischen.

Technical Specifications

Composition 100 % Polyester Trevira CS
Weight Approx. 400 g/lfm.
Width 170 cm
Flammability DIN 4102 B1
Abrasion resistance 20.000 rubs according to Martindale
Colourfastness to light 5 - 6
Maintenance Wipe clean with a damp cloth.

Description technique

Composition 100 % Polyester Trevira CS
Poids ca. 400 g/lfm.
Largeur 170 cm
Classement feu M1
Résistance à l'usure 20.000 mouvements selon Martindale
Solidité à la lumière 5 - 6
Nettoyage Essuyez avec une étoffe humide.

Descrizione Tecnica

Composizione 100 % Poliestere Trevira CS
Peso ca. 400 g/lfm.
Altezza 170 cm
Resistenza al fuoco M1-DIN 4102 B1
Resistenza all'abrasione oltre 20.000 "sfregamenti" secondo Martindale
Resistenza del colore alla luce 5 - 6
Manutenzione Pulire con panno umido.

PREFORM GmbH
Esbacher Weg 15
D-91555 Feuchtwangen
Tel.: + 49 98 52 9070
Fax: + 49 98 52 907-77
info@preform.de
www.preform.de